

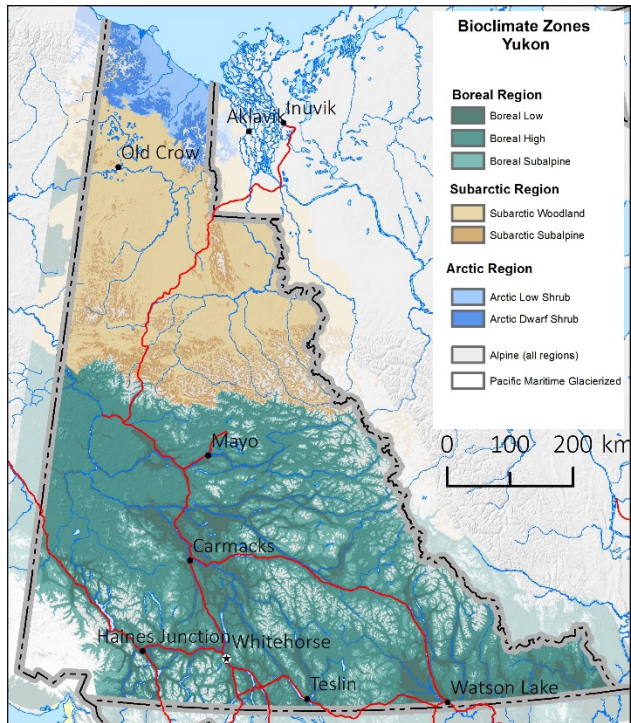
Research and monitoring activities and needs related to ABoVE and POLAR activities

Nadele Flynn, Coordinator – Ecosystem and Landscape
Classification Program

Government of Yukon, Department of Environment

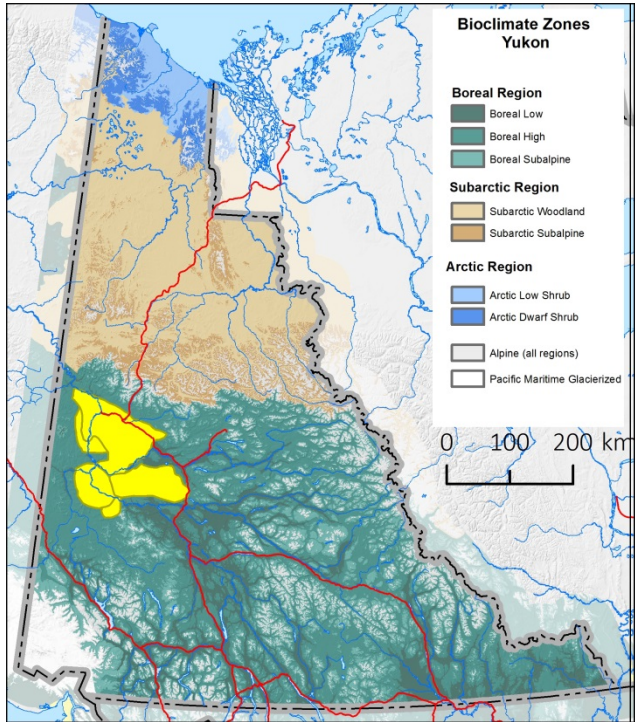
May 16, 2016

Ongoing research and monitoring



- **Bioclimatic Ecosystem Classification**
 - Guide books for on-the-ground ecosystem identification and map application
 - Southern Lakes (Summer 2016, North Central (Summer 2017), Arctic (Winter 2017)
- **Ecological mapping**
 - Yukon North Slope (Fall, 2016)
 - Yukon Bioclimatic Zone/Subzone map (Version 1 - Summer 2016)
- **Data Collection**
 - Biophysical (vegetation, soil, and terrain) plot (relevé) repository and data collection/sharing (ongoing)

Planned research and monitoring



- **Bioclimatic Ecosystem Classification**
 - focus on higher elevation and latitude bioclimate zones
 - Boreal/Subarctic - treed vegetation associations (summer 2017)
 - Boreal High (tbd)
 - Klondike (tbd)
 - North Yukon (tbd)
- **Ecological mapping**
 - Broad to local scale within priority areas
 - Klondike (tbd)
 - North Yukon (tbd)

Management related research & monitoring needs

- Correlation/crosswalk ecosystem classes and mapped units with adjacent jurisdictions
- Increase biophysical (vegetation, soil, and terrain) data through collaboration with partners
- Develop key input layers for predictive and/or manual ecosystem mapping (i.e. Digital Terrain Model, Digital Surface Model, remotely sensed imagery)
- Share and refine approaches for ecological mapping and development of map units/labels

Opportunities for ABoVE/POLAR for engagement, education, outreach

- Practitioners workshop: Ecosystem and Landscape Classification/Mapping in Winter 2017
 - Discussion of ecological map and classification products to support decision making
 - Exchange information related to ecosystem and classification interests and projects
 - Opportunity to share and connect with people engaged in using and developing ELC tools

Recommendations for ABoVE/POLAR for engagement, education, outreach

- Continue to communicate through and with YGs science advisor